



Medium Chess Puzzle # 0123

By

G Bud Games
<https://gbud.in>

January 31, 2022

Contents

Medium Chess puzzle # 0123 - Mate in 2 moves	3
Medium chess puzzle 0123	3
Solution to medium chess puzzle 0123	4
Solution 1	4
Right moves for the solution to the medium chess puzzle 0123	6
Explanation for the moves	6
Categories of medium chess puzzle 0123	7
medium chess puzzle 0123 chart	8
How to view the solution to medium chess puzzle 0123	10
How to get help for moves in the medium chess puzzle 0123 . .	11
Play chess for free	12

List of Figures

1	Solve this medium chess puzzle 0123. Mate in 2 moves @ https://gbud.in/gl8lcb2	3
2	Solve this medium chess puzzle online with solution @ https://gbud.in/gl8lcb2	3
3	Initial board position of medium chess puzzle 0123	4
4	Rxf8+	5
5	Qxf8	5
6	Rxf8#	6
7	medium chess puzzle 123 chart 1	8
8	medium chess puzzle 123 chart 2	9
9	medium chess puzzle 123 chart 3	9
10	medium chess puzzle 123 chart 4	10
11	Click the solution button to view solutions @ https://gbud.in/gl8lcb2	10
12	Click the help button to get help on next move @ https://gbud.in/gl8lcb2	11
13	Solve more medium puzzles @ https://gbud.in/chsmdpz	11
14	Solve other puzzles @ https://gbud.in/chsgppz	11
15	Play chess online for free. Solve puzzles and play with friends	12
16	Solve this puzzle online by scanning this QR code or go to the link below	13

Medium Chess puzzle # 0123 - Mate in 2 moves

Solve this medium chess puzzle and improve your chess games through improvement of your chess strategies and chess tactics.

Puzzle No : 0123

Difficulty level : medium

Description : Mate in 2 moves

Next Move : White

Player level : Intermediate

Short URL for puzzle : <https://gbud.in/gl8lcb2>

Medium chess puzzle 0123

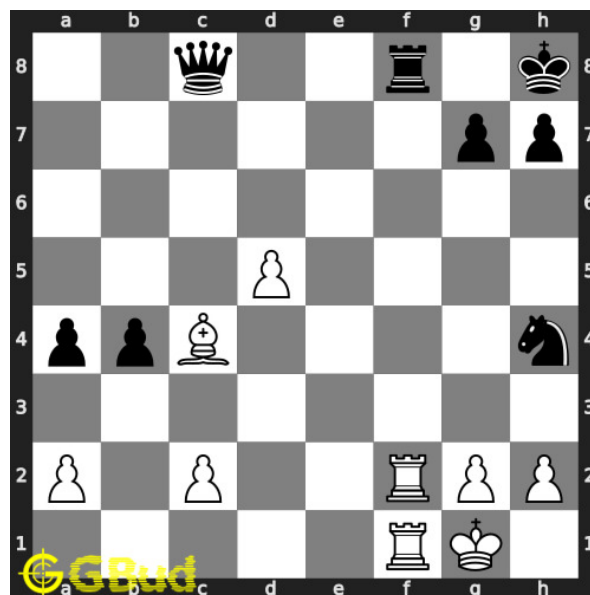


Figure 1: Solve this medium chess puzzle 0123. Mate in 2 moves @ <https://gbud.in/gl8lcb2>



Figure 2: Solve this medium chess puzzle online with solution @ <https://gbud.in/gl8lcb2>

Dont forget to check out [chess puzzles](#), [easy chess puzzles](#), [medium chess puzzles](#), [hard chess puzzles](#) and [chess puzzles collections](#) .

Solution to medium chess puzzle 0123

At this puzzle, next [move](#) is by [White](#). The objective of the puzzle is to mate in 2 moves.

See the interactive solution at the [puzzle page](#)

Solution 1

Initial board position This is the initial board position of medium chess puzzle 0123.

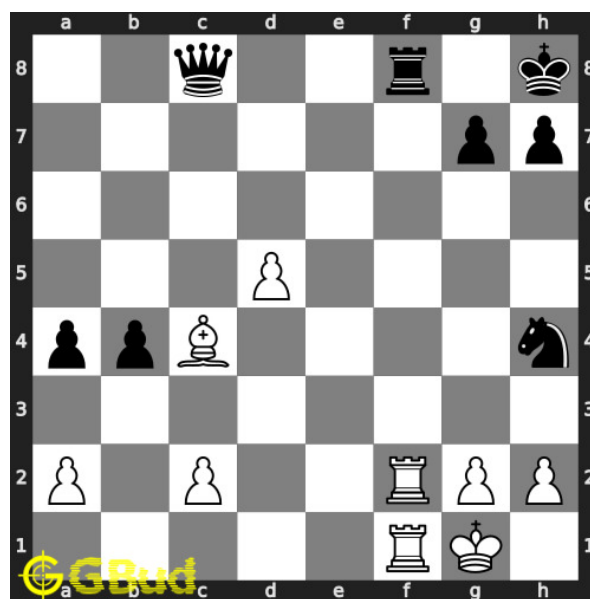


Figure 3: Initial board position of medium chess puzzle 0123

Move 1 Move by white

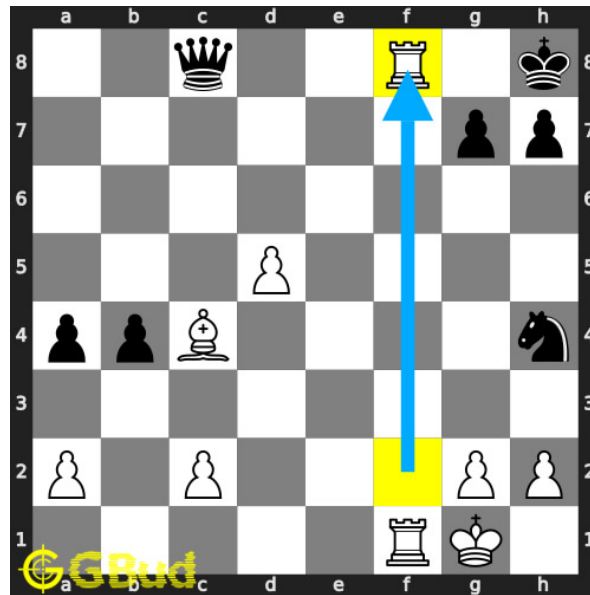


Figure 4: Rxf8+

your **rook** from the **battery** formation **sacrifices** itself to attract the opponent's **queen** which is guarding eighth **rank**. it now **forks** the opponent's **king** and **queen**.

Move 2 Move by black

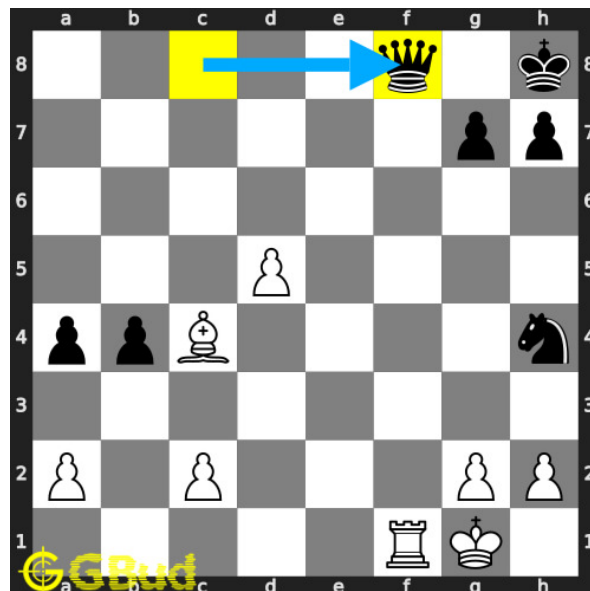


Figure 5: Qxf8

this is a zugzwang **move** as the opponent's **queen** is forced to respond.

Move 3 Move by white

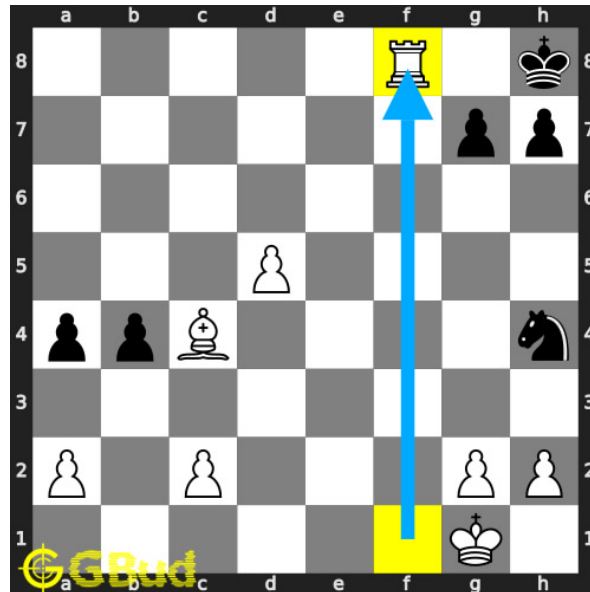


Figure 6: Rxf8#

your **rook captures** opponent's hanging **queen** and **checkmate**. this is similar to back-rank **mate** since the opponent's **king** is blocked by friendly **pawns**. this is how you can **mate** in 2 **moves**.

Right moves for the solution to the medium chess puzzle 0123

Based on the objective of the puzzle, you have to make the right moves. Following are the right moves

1. Rxf8+, Rxf8#

Explanation for the moves

1. Rxf8+ - Your rook from the battery formation sacrifices itself to attract the opponent's queen which is guarding eighth rank. It now forks the opponent's king and queen.
2. Qxf8 - This is a zugzwang move as the opponent's queen is forced to respond.
3. Rxf8# - Your rook captures opponent's hanging queen and checkmate. This is similar to back-rank mate since the opponent's king is blocked by friendly pawns. This is how you can mate in 2 moves.
4. For right move - You know how to use the battery of rooks to end the game. Keep winning

5. For wrong move - You failed to have a checkmate. Try again with the sacrifice of the rook.

Categories of medium chess puzzle 0123

This medium chess puzzle falls in these categories.

1. [Medium chess puzzles](#)
2. [Sacrifice puzzles in chess](#)
3. [Mate in 2 puzzles in chess](#)
4. [Endgame puzzles in chess](#)
5. [Fork puzzles in chess](#)
6. [Battery puzzles in chess](#)
7. [Strategy puzzles in chess](#)
8. [Mate pattern puzzles in chess](#)
9. [Zugzwang puzzles in chess](#)
10. [Rook puzzles in chess](#)

medium chess puzzle 0123 chart



Figure 7: medium chess puzzle 123 chart 1



Figure 8: medium chess puzzle 123 chart 2



Figure 9: medium chess puzzle 123 chart 3



Figure 10: medium chess puzzle 123 chart 4

How to view the solution to medium chess puzzle 0123

To view the [solution to this puzzle](https://gbud.in/blog/game/chess/medium-chess-puzzles/medium-chess-puzzle-0123.html), follow the steps given below

1. Go to the [puzzle page](https://gbud.in/blog/game/chess/medium-chess-puzzles/medium-chess-puzzle-0123.html)
2. Click the solution button (Key as shown [below](#)) to view the solution



Figure 11: Click the solution button to view solutions @ <https://gbud.in/gl8lcb2>

How to get help for moves in the medium chess puzzle 0123

To get help or the possible next moves in the puzzle, , follow the steps given below

1. Go to the [puzzle page](#)
2. Click the help button (exclamation mark as shown [below](#)) to get help or suggestion on next possible [move](#)



Figure 12: Click the help button to get help on next move @ <https://gbud.in/gl8lcb2>



Figure 13: Solve more medium puzzles @ <https://gbud.in/chsmdpz>



Figure 14: Solve other puzzles @ <https://gbud.in/chsgppz>

Play chess for free

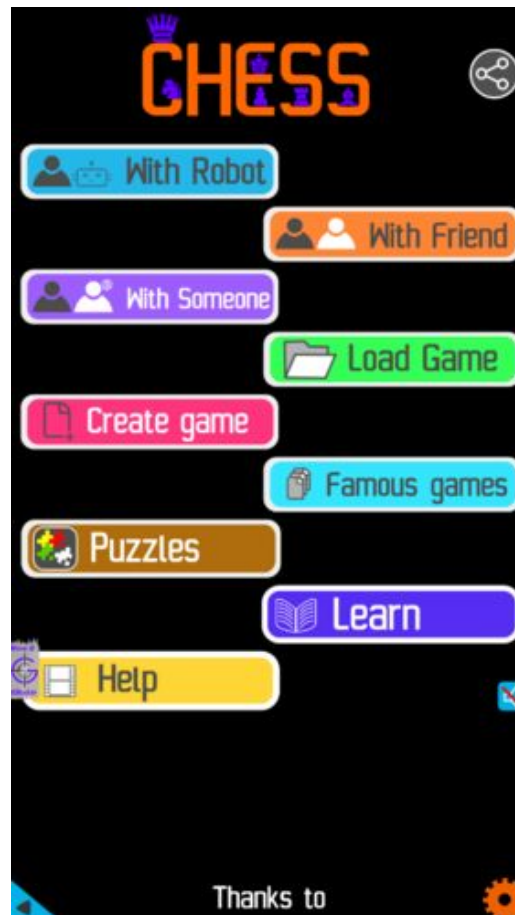


Figure 15: Play chess online for free. Solve puzzles and play with friends

Play chess for free at <https://gbud.in/chs>

We present you a platform to play chess online with friends for free. No need to install any app. You can play chess for free without registration or login.

Simple. You can do several chess related activities.

1. [solve chess puzzles](#)
2. [learn about chess](#)
3. [play chess with computer](#)
4. [play chess with friend](#)
5. [create your own chess games](#)

6. [fen viewer](#)
7. [fen editor](#)
8. [fen generator](#)
9. [pgn viewer](#)
10. [chess board editor](#)
11. [view famous chess games.](#)



Figure 16: Solve this puzzle online by scanning this QR code or go to the link below

<https://gbud.in/gl8lcb2>

Read the latest article on Medium Chess puzzle # 0123 - Mate in 2 moves by scanning this QR code or click the link

Previous article : « [Medium Chess puzzle # 0122 - Mate in 2 moves](#)

Next article : [Medium chess puzzles](#) »

[Back to top](#)

[Contact Us](#)